



VSR PRODUCTS DROP DOWN KIT FOR RADIOMASTER MT12 INSTALL GUIDE

Tools required (not included):

- 2.0mm Hex Screwdriver
- 2.5mm Hex Screwdriver
- Small Phillips Screwdriver (PH0 recommended)

Parts required (included):

- 3x M2.5 Cap head screws
- 2x M3 Flat head screws
- 2x 3D Printed Parts





Step 1: Remove the two cap head screws at the front of the radio





Step 2: Pull the steering assembly away from the radio. **DO NOT RIP THE RIBBON CABLE.** At this point, the steering assembly should be loose, but still attached to the radio by the ribbon cable.



Carefully lift the black lever on the radio side to release the ribbon cable. Recommended to use a fingernail for this.

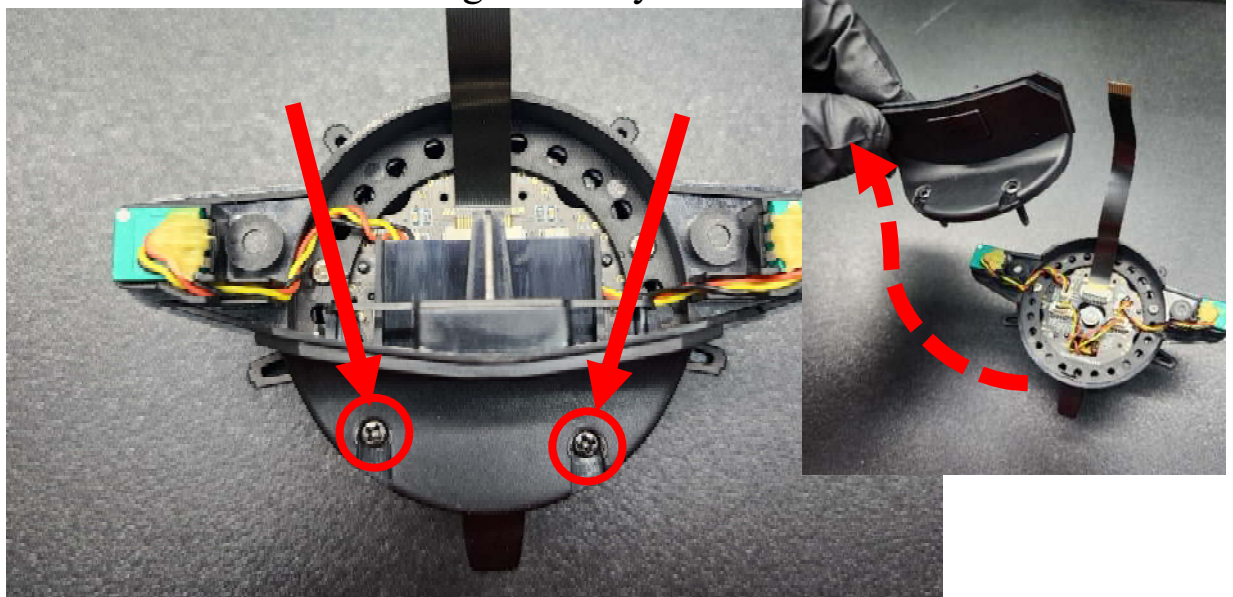




Now, the steering assembly can be fully removed from the radio.



Step 3: Remove the two black button head screws from the back plate of the steering assembly.

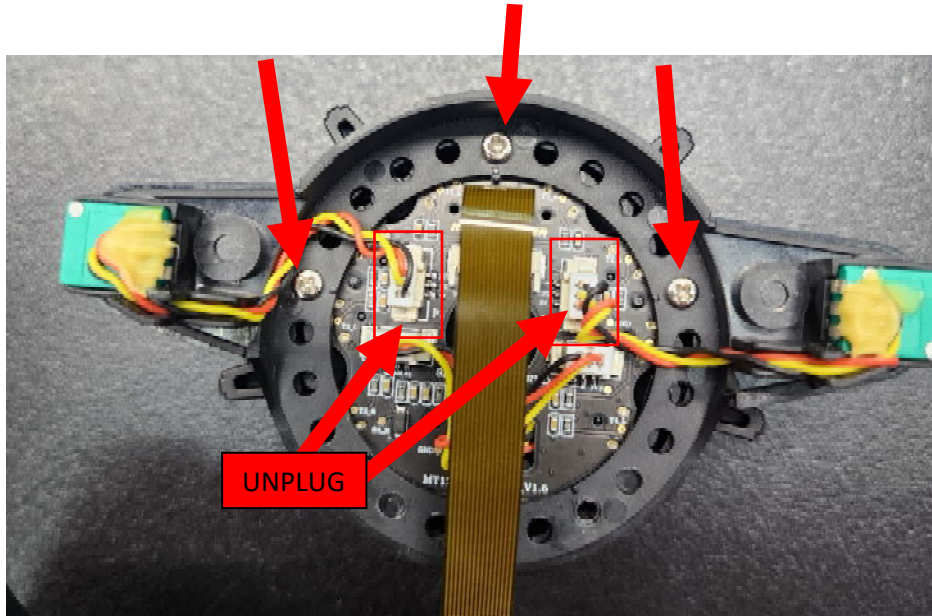


The back plate can now be removed.

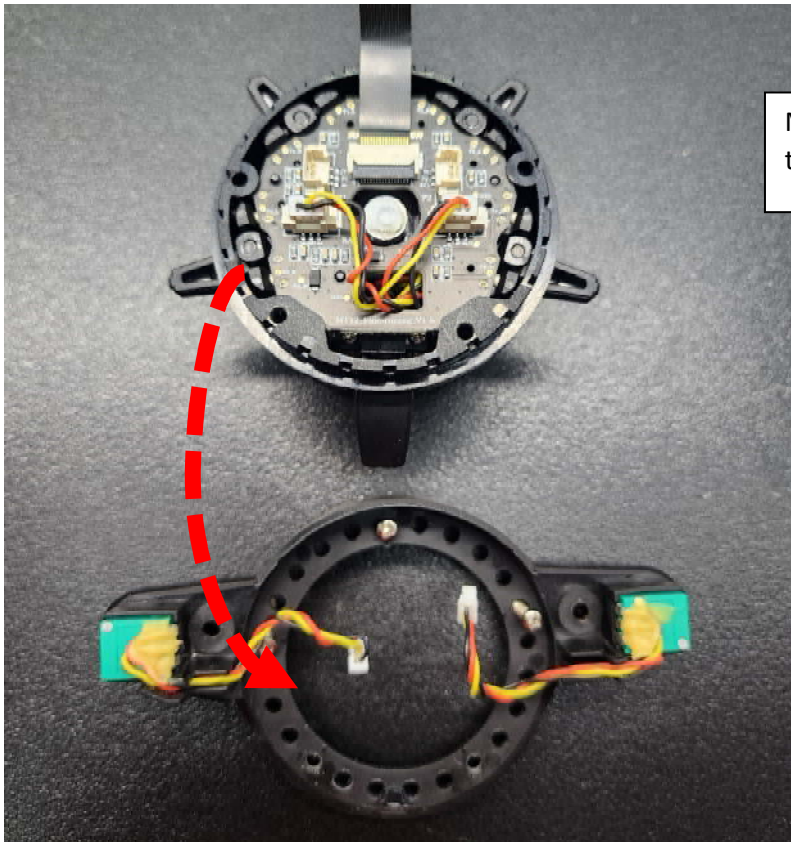


Step 4: Remove the three silver screws at the back of the steering assembly. **UNPLUG THE TWO DIALS**

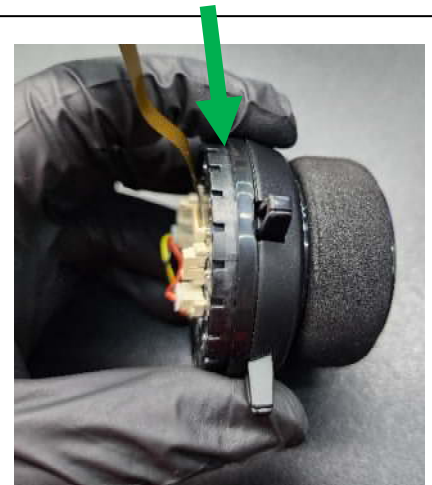
Note, you need to move the ribbon cable to reach the top (12 o'clock position) screw.



The back part of the steering assembly can now be lifted away.

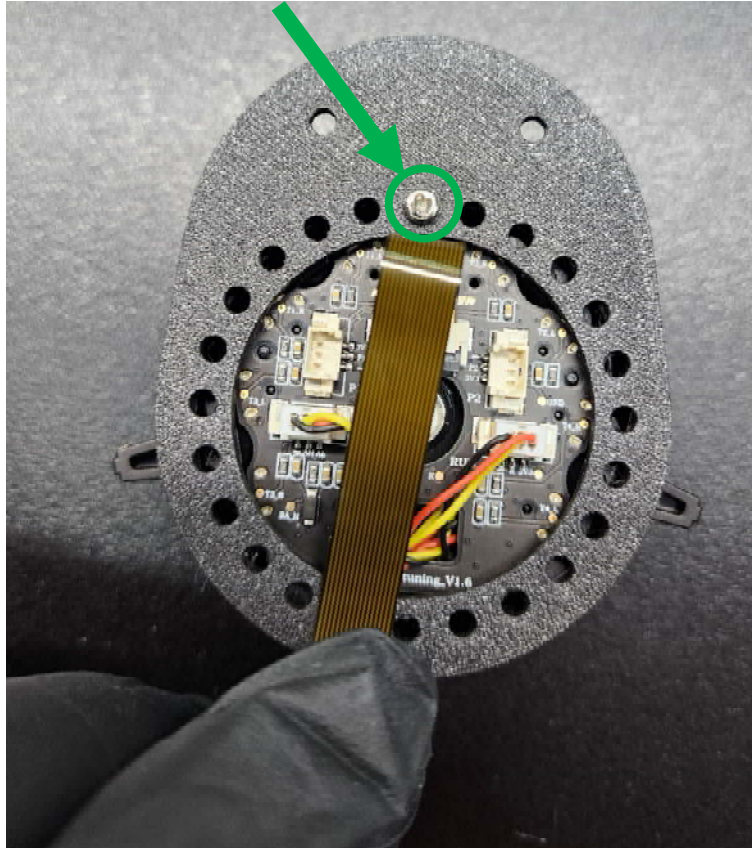


Make sure to keep the slotted ring on the steering assembly.





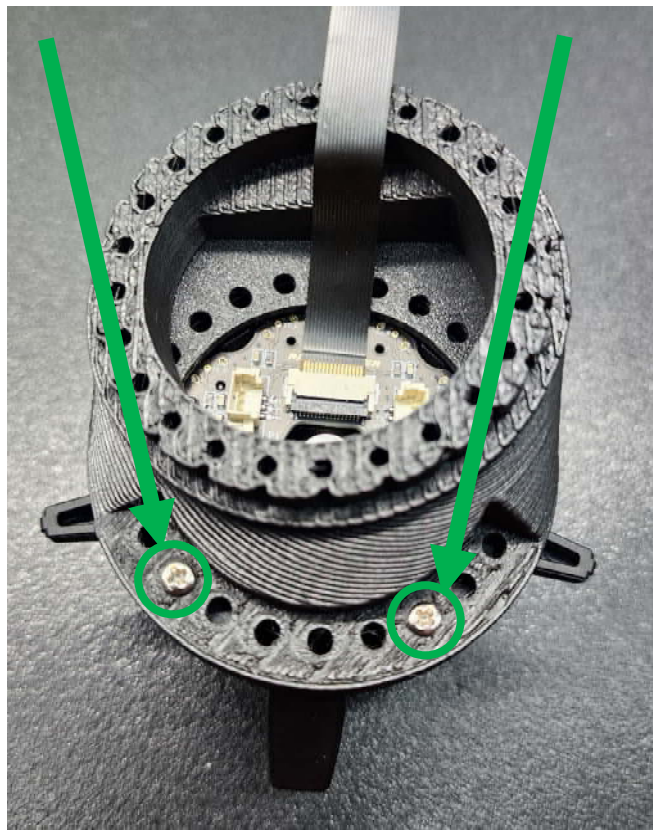
Step 5: Place the wheel-side 3D printed part (the thinner one) onto the back of the steering assembly. Align the wheel side 3D printed part such that the top screw is in the 12 o'clock position. **Install the 12-o'clock screw removed in step 5 in the same location, tighten until snug (DO NOT OVERTIGHTEN).**





Step 6: Place the angle (or straight, depending on kit) 3D printed adapter on the back of the new steering assembly. Install the 2 silver screws removed during step 5 to secure the 2 parts together.

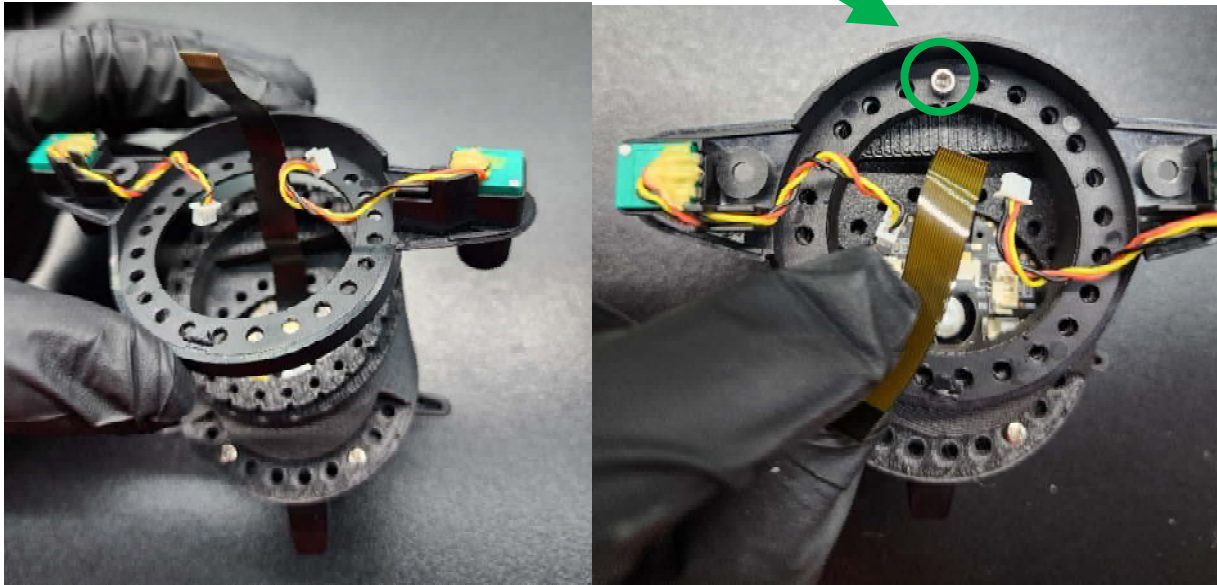
Make sure to feed the ribbon cable *through* the 3D printed part as shown below.



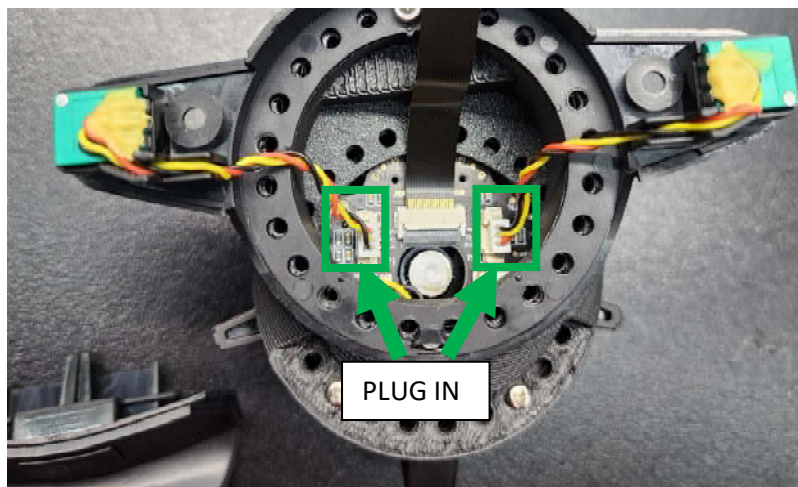


Step 7: Place the plastic piece with the 2 dials on it back on the steering assembly. The plastic parts will press fit together, make sure to line up the slots along the ring.

Use one of the included M2.5mm cap head screws to tighten the parts together until snug in the 12 o'clock position.

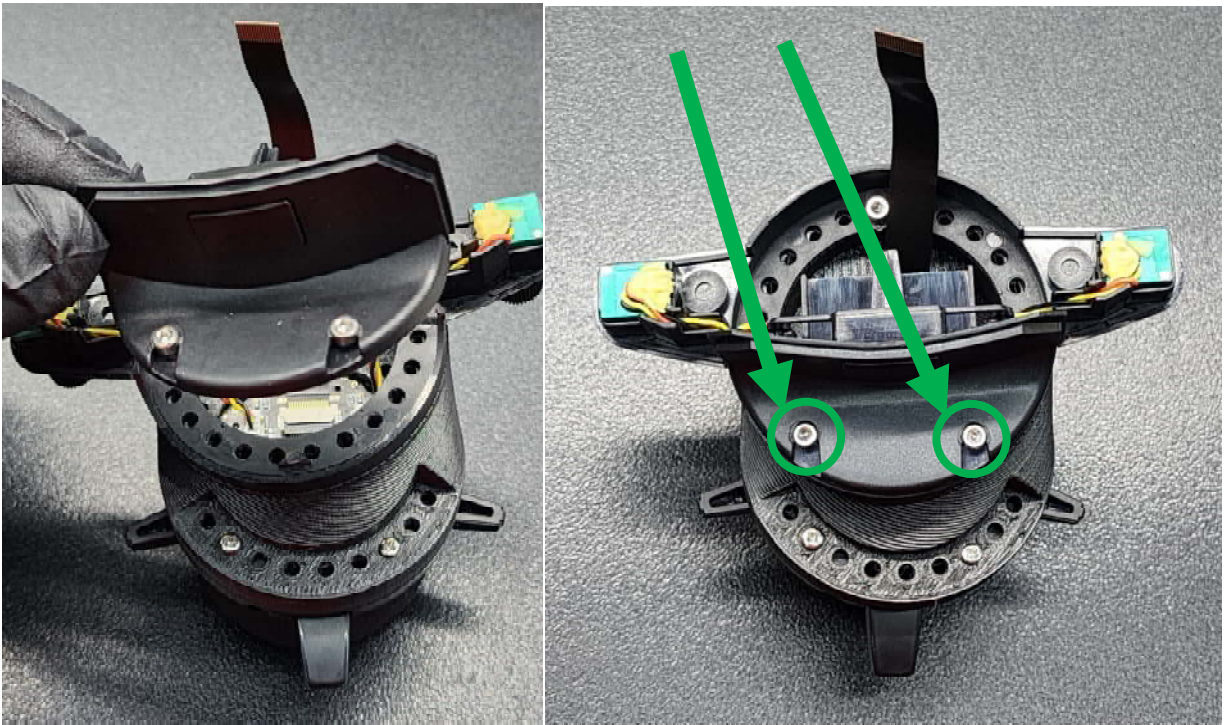


Plug in the two dials back into the PCB. Tweezers can be helpful if you find it hard to reach.





Use the remaining two M2.5mm cap head screws to install the back cover.

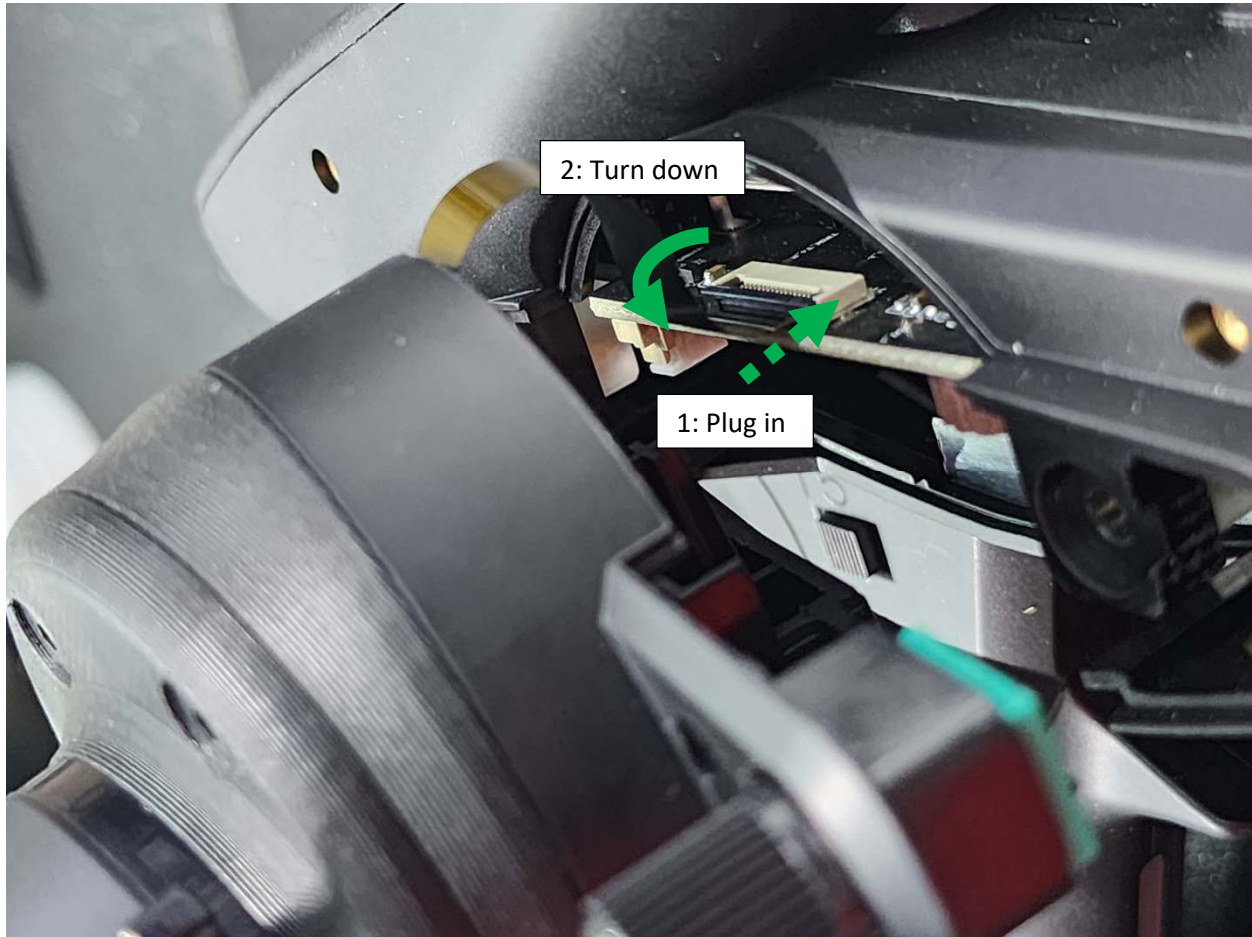


Step 8: Install the two included M3 mm flat head screws in the front of the steering assembly





Step 9: Plug in the ribbon cable from the steering assembly into the radio. Then turn the plastic latch down.



Then, as you install the steering assembly back onto the radio, ***MAKE SURE NOT TO KINK THE RIBBON CABLE.*** Tuck the excess ribbon cable either in towards the radio or into the drop down adapter.



Step 10: Install the 2 cap head screws as shown to finish the installation.



These two black Phillips screws are NOT used in with the VSR Products drop down kit.

